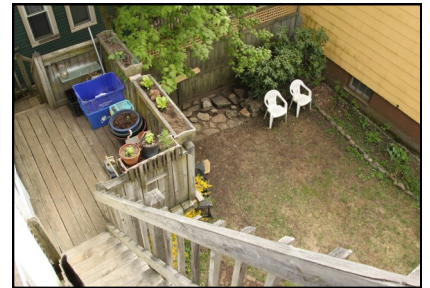


MLS #1251351



52 Spruce St. Portland - \$499,000

West End 3-unit features private decks, separate systems, and parking for four (two lanes, tandem). Bring your personal touches to the interior spaces and courtyard to make the most of all that Portland's vibrant West End has to offer.



Property Details

Year Built: 1864

Lot Size: .077 acres

Living Area: 3,024 sq. ft.

Utilities: Gas

Parking: 4 Off-street spaces

Rents

Unit #1 (2BR) - \$1,295++ (5/31/16)

Unit #2 (2BR) - \$1,025++ (6/30/16)

Unit #3 (1BR) - \$1,050++ (5/31/16)

Expenses /Year

Taxes: \$7,064 Insurance: \$2,064

Management Fees: \$3,600

Water/Sewer: \$961

House Electric: \$144

Heat: Tenants Pay



Brit Vitalius

(M) 207.318.2555
brit@vitalius.com

Chris Sullivan

(M) 207.730.0884
chris@vitalius.com

VITALIUS REAL ESTATE GROUP

306 Congress Street, Suite 3 | Portland, ME 04101

Phone: 207-541-3755 | Fax: 207.631.2054

www.vitalius.com