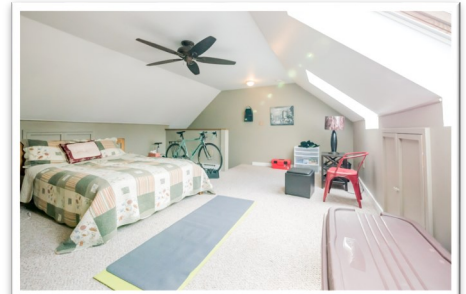
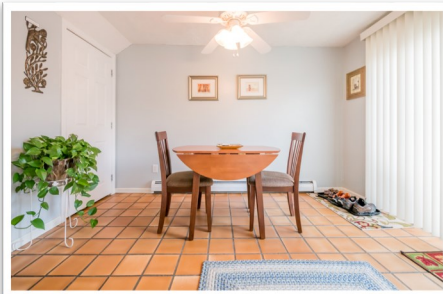


MLS# 1254203



448 Brighton Avenue, Portland Condo \$189,900

This Rosemont neighborhood townhouse condo is tucked away but perfectly situated. Enter behind the old school off Stevens Avenue into the reserved parking area and have all the conveniences of walking or biking to the surrounding amenities, including Portland trails, The Crooked Mile, Rosemont Market and others. The large bonus room on the 3rd floor is a pleasant surprise and could be used as living space, an office, a yoga/workout room, or huge finished storage space.



Property Details

Year Built: 1986
Living Area: 1,170 SF
BR: 2 **Baths:** 1.5
Utilities: Natural Gas
Taxes: \$3,048
Parking: 1-4 Spaces
Condo Dues: \$106



Sarah Delisle

(M) 207.523.9183

(O) 207.541.3755

sarah@vitalius.com

VITALIUS REAL ESTATE GROUP

306 Congress Street, Suite 3 | Portland, ME 04101

Phone: 207-541-3755 | Fax: 207.631.2054

www.vitalius.com